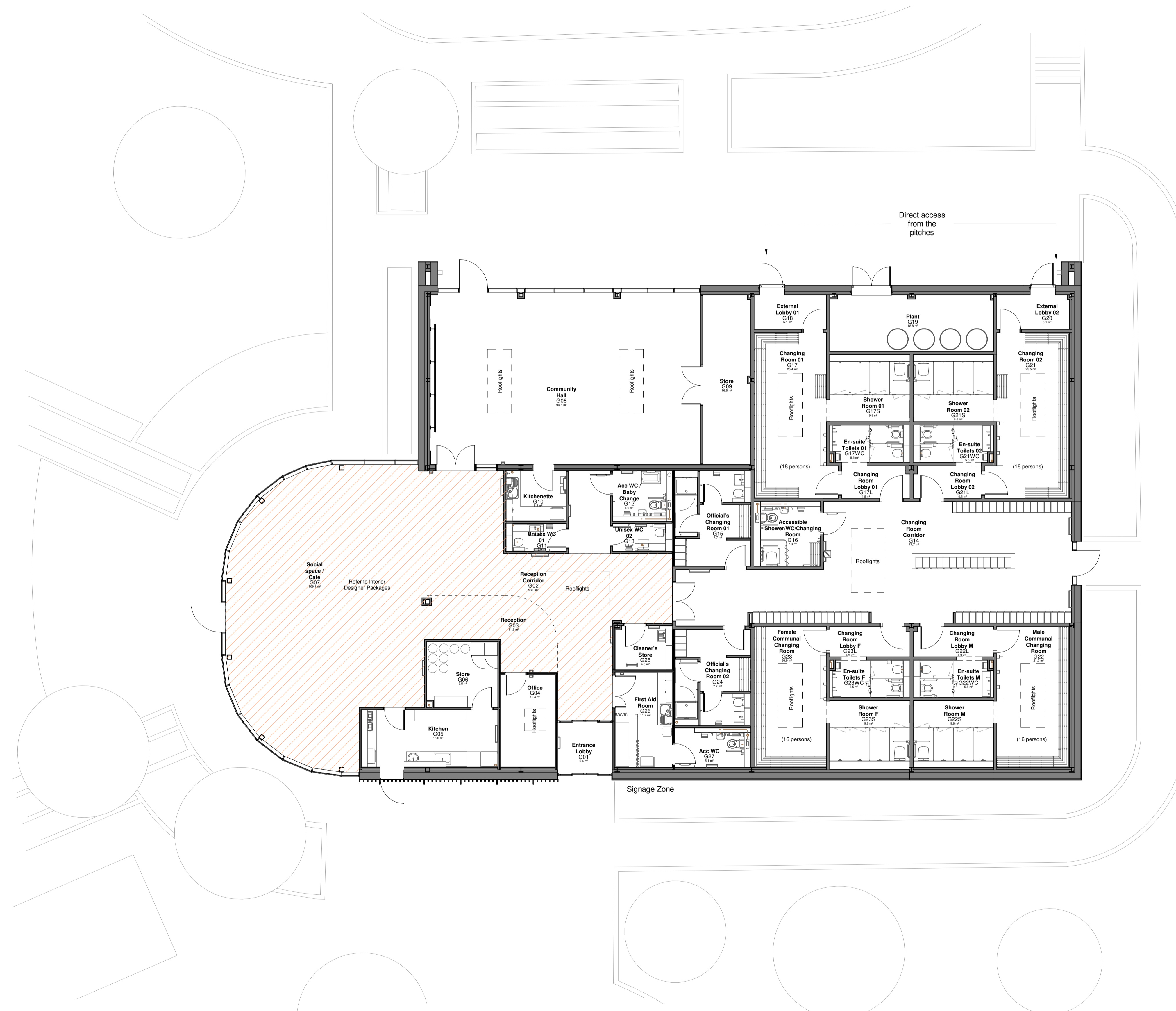


SOA1 - 594mmx417mm



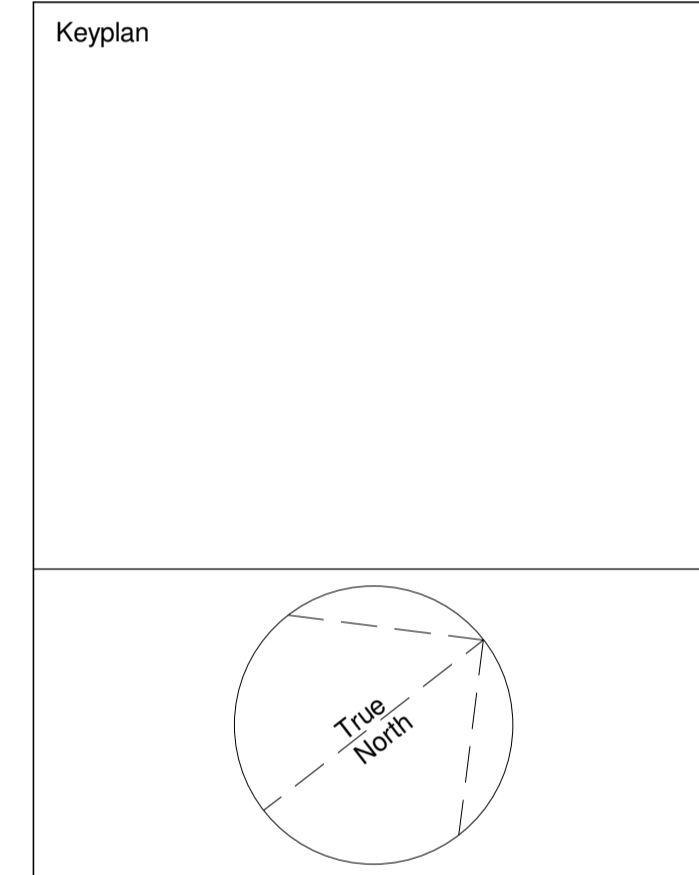
DATE	REVISION	REV	DR	CH
01/10/21	STAGE 3 ISSUE	P01	SC	KSB

This drawing has been prepared solely for the use of BUCKINGHAMSHIRE COUNCIL and there are no representations of any kind made by NORR Consultants Limited to any party with whom NORR Consultants Limited has not entered into a contract.

This drawing must not be used, reproduced or revised without written permission.

This drawing shall not be used for construction purposes until a "Ax - APPROVED FOR STAGE x" status appears in the Sheet Status.

Constructors must only work to figured dimensions which are to be checked on site. Do not scale from hard copy drawings.



NORR
 NORR Consultants Limited.
 An Ingenium International Company

The Stanley Building,
 7 Pancras Square,
 London N1C 4AG
 England, UK
 norr.com

Drawn SC	Date 04/08/21
Checked KSB	Date 18/09/21
Scale 1 : 100 @ A1	
Client BUCKINGHAMSHIRE COUNCIL	
Project WINSLOW SPORTS HUB	
Drawing Title GA GROUND FLOOR PLAN	
Sheet Status S8 - PLANNING	
Project No. IALN20-0028	
Drawing No. WSH-NOR-XX- 00-DR-A-99001	Rev. P01