



## Buckinghamshire Highways

### Directorate for Communities

Service Director: Kevin Goad  
Buckinghamshire Council

The Gateway  
Gatehouse Road  
Aylesbury  
HP19 8FF

[highways.consultations@buckinghamshire.gov.uk](mailto:highways.consultations@buckinghamshire.gov.uk)

24<sup>th</sup> June 2025

Ref: Countywide Disabled Bays and Parking  
Restrictions

Dear Resident,

### Statutory Consultation for the introduction and formalisation of two Disabled Bays in Long Crendon

Buckinghamshire Highways are proposing to introduce and formalise two Disabled Bays on the road mentioned in the below table.

Road Name (And Extents)	Proposal
Meadowbank Close (Outside No. 12)	Introduce a Disabled Badge Holders Only Bay
Meadowbank Close (Outside No. 17)	Formalise existing Disabled Bay

*Location and Proposals*

### How to Have Your Say

Details of the proposals and how to support, comment or object, can be found by visiting the Your Voice Bucks website <https://yourvoicebucks.citizenspace.com> and searching for “Countywide Disabled Bays and Parking Restrictions” where you will find a link to the online survey at the bottom of the consultation page. There is also a QR code at the bottom of this letter which you can scan with your smartphone to access the consultation page directly.

Alternatively, you can email us at [highways.consultations@buckinghamshire.gov.uk](mailto:highways.consultations@buckinghamshire.gov.uk) or write to us at the following postal address: **Design Services, Buckinghamshire Highways, Floor 10, Walton Street Offices, Walton Street, Aylesbury, HP20 1UA** with your comments.

If you would like a printed copy of the information, please get in touch with us at the email address provided above. Alternatively, you can view the proposals by appointment at the Main Reception, Walton Street Offices, Walton Street, Aylesbury, HP20 1UA.

**The consultation opens on Friday 04 July 2025 and closes at 11:59pm on Friday 01 August 2025.**

Buckinghamshire Council is obliged to make any representations received in response to this notice, open to inspection under the Local Government (Access to Information) Act 1985.

## What happens next?

We will develop the proposals based on what residents and key stakeholders within the area tell us. If the feedback shows people support the proposals, we will begin the process of implementing the Disabled Bays, and we will update you again to confirm the proposals.

The consultation web page <https://yourvoicebucks.citizenspace.com/roads-parking/county-wide-disabled-bays-and-parking-restrictions> will be updated with the outcome of this consultation.

Yours faithfully,

Buckinghamshire Council

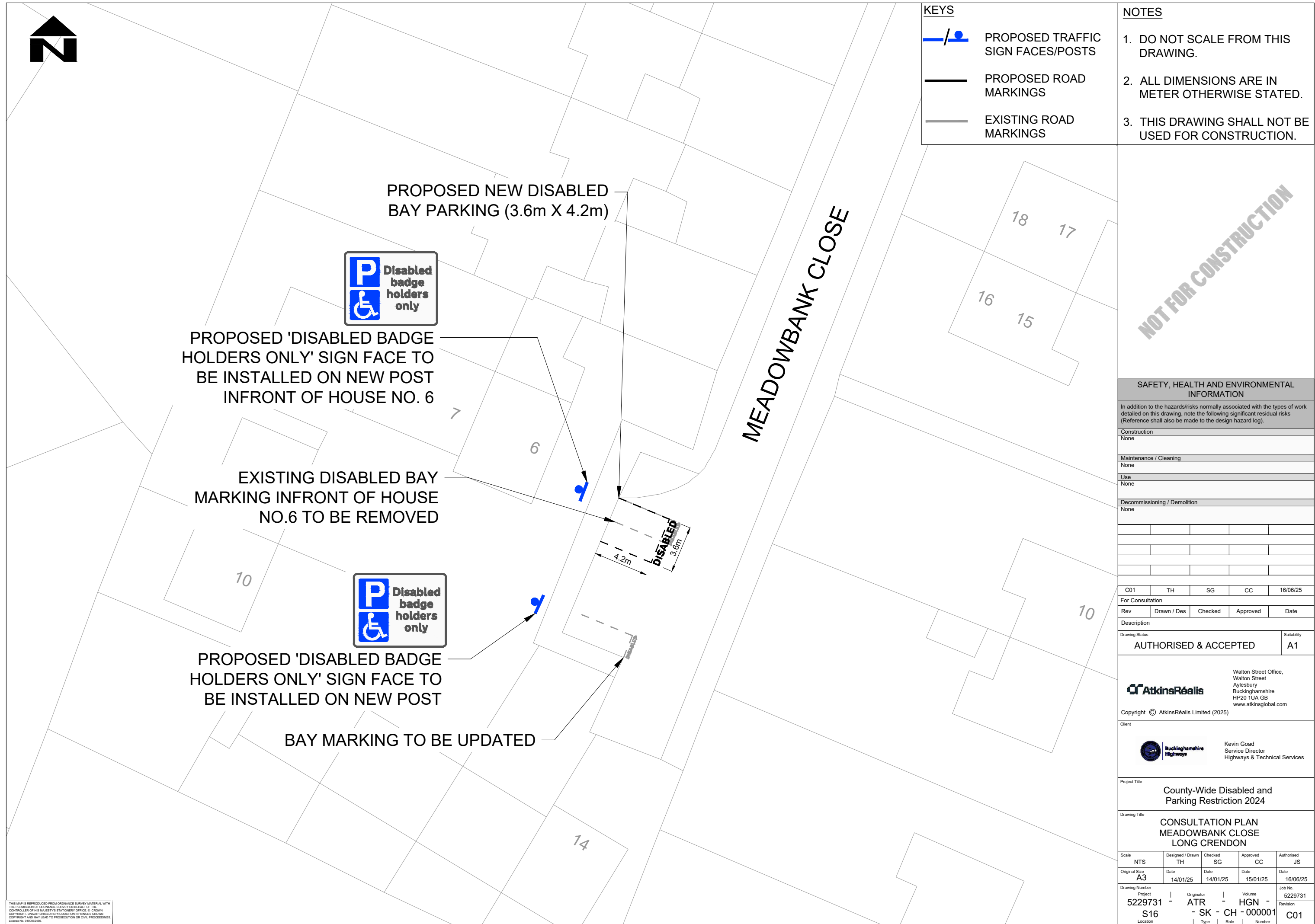


# **STATEMENT OF REASONS**

## **Countywide Disabled Bays and Parking Restrictions (Long Crendon)**

It is proposed to introduce and formalise two Disabled Bays at the location mentioned in the below table and the reasons for proposing and formalising the bays.

<b>Road Name (And Extents)</b>	<b>Type of Parking Restrictions</b>	<b>Reasons for Proposal</b>
Meadowbank Close (Outside No. 12)	Introduce a Disabled Badge Holders Only Bay	By authorising the advertisement of the proposal, Buckinghamshire Council (while having regard to the matters specified in Section 122 Subsection (2) of the Road Traffic Regulation Act) has given consideration to its duty under Section 122(1) of that Act as to:
Meadowbank Close (Outside No. 17)	Formalise existing Disabled Bay	<i>“secure the expeditious, convenient and safe movement of vehicular and other traffic (including pedestrians) and the provision of suitable and adequate parking facilities on and off the highway [...]”</i>



CAD FILE: C:\projectwise\atkins\_highways\_uk\d0101642\5229731-ATR-HGN-S16-SK-CH-000001.dwg

The Buckinghamshire Council (Prohibition of Waiting, Loading and Stopping) and (On-Street Parking Places) Order 2021



<p><b>SCALE</b> - 1 : 1250    at A3 size</p> <p>NOTE: SEE STATIC MAP SCHEDULE LEGEND FOR RESTRICTIONS DISPLAYED</p> <p>This map is reproduced from Ordnance Survey material with the permission of Ordnance Survey on behalf of the Controller of Her Majesty's Stationery Office © Crown Copyright. Unauthorised reproduction infringes Crown copyright and may lead to prosecution or civil proceedings. Buckinghamshire Council Licence No: 100021529 2025</p>		<p>Status:    PROPOSED</p> <p>Tile Reference:    Tile Ref: EN24</p> <p>Sheet Revision Number:    8</p> <p>Sheet Active From:    31/05/2025</p>
---------------------------------------------------------------------------------------------------------------------------------------------------------------------------------------------------------------------------------------------------------------------------------------------------------------------------------------------------------------------------------------------------------------------------------------------------------------------------	--	------------------------------------------------------------------------------------------------------------------------------------------------