



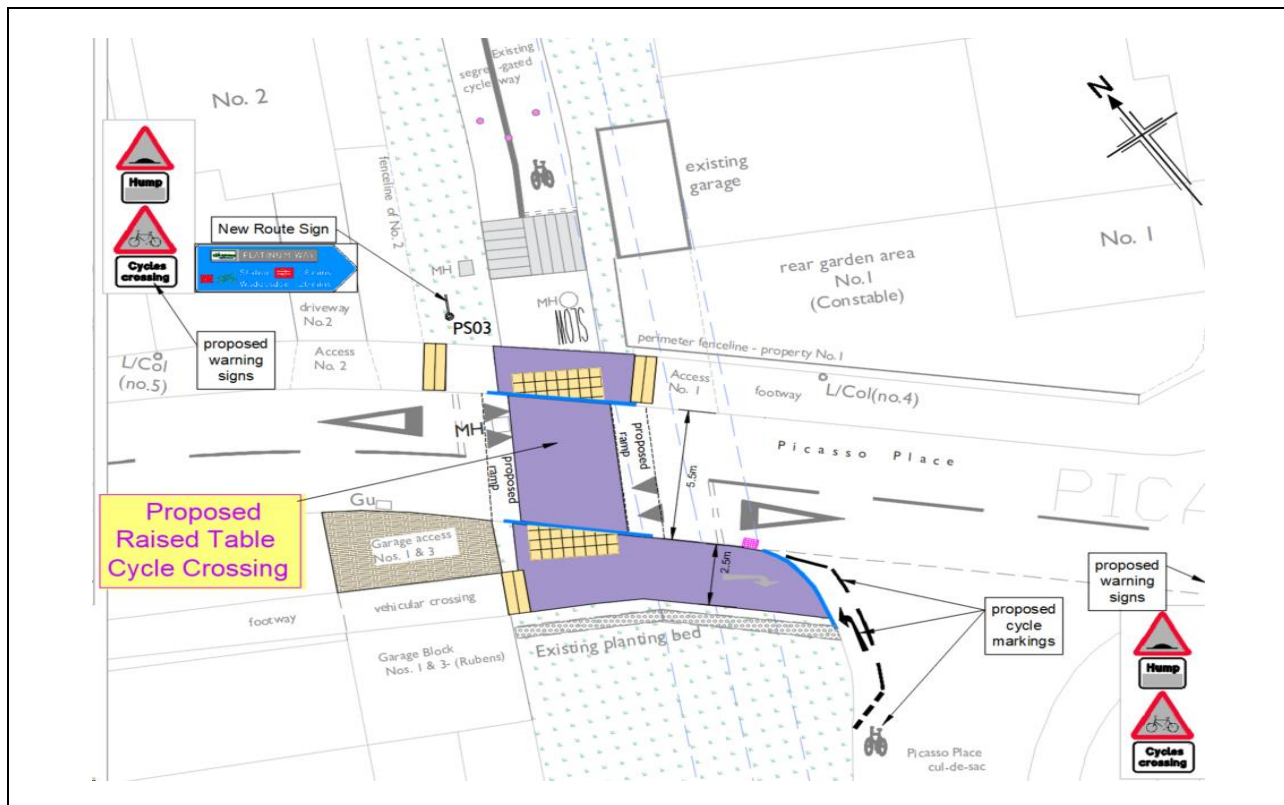
**PUBLIC NOTICE OF INTENT TO CONSTRUCT
A RAISED TABLE AND CYCLE CROSSING**

PICASSO PLACE - Aylesbury

NOTICE IS HEREBY GIVEN that Buckinghamshire Council, in exercise of its powers under Sections 90A – 90F of the Highways Act 1980, The Highways (Traffic Calming) Regulations 1999 and after consultation with the Chief of Police, proposes to construct a raised table in the publicly maintained section of Picasso Place, Aylesbury.

The location of the proposed Raised Table is as follows;

- At a point approximately 35 metres from the Rubens Close Junction;
- And at a point approximately 27 metres from the Constable Place Junction.



© Crown copyright. All rights reserved. Buckinghamshire County Council 10021529

The Raised Table proposal is to improve the safety for Users of the Platinum Way Cycleway which would cross over Picasso Place carriageway using these new facilities, with motorists encouraged to approach at a slower speed.

Objections to the proposal together with the grounds on which they are made must be sent in writing to the undersigned (for the attention of "BH Design Services") by 6th December 2023, emailed to Parkingtro@buckinghamshire.gov.uk or submitted via our "Your Voice Bucks" website at: <https://yourvoicebucks.citizenspace.com/>

Dated 15th November 2023